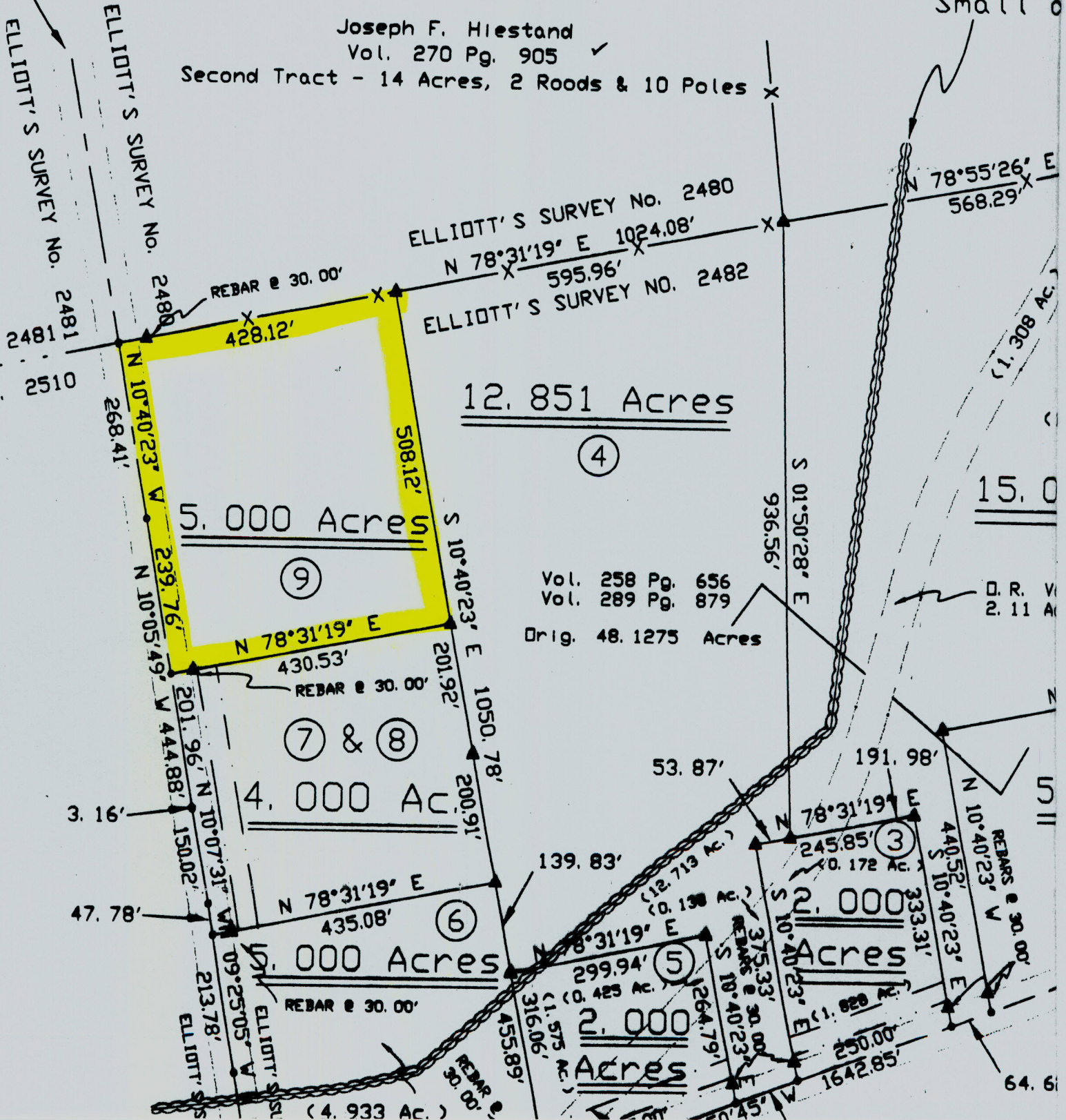


d (T-225B)
R/W ✓

Joseph F. Hiestand
Vol. 270 Pg. 905 ✓
Second Tract - 14 Acres, 2 Roods & 10 Poles



12.851 Acres

(4)

5.000 Acres

(9)

Vol. 258 Pg. 656
Vol. 289 Pg. 879
Orig. 48.1275 Acres

(7) & (8)

4.000 Ac

(6)

2.000 Acres

(5)

2.000 Acres

(3)

2.000 Acres

64.6